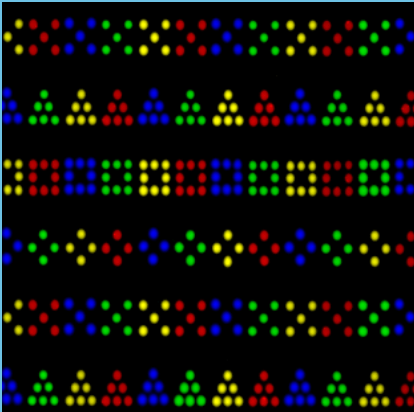
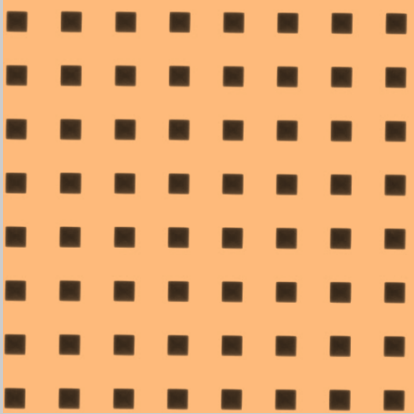
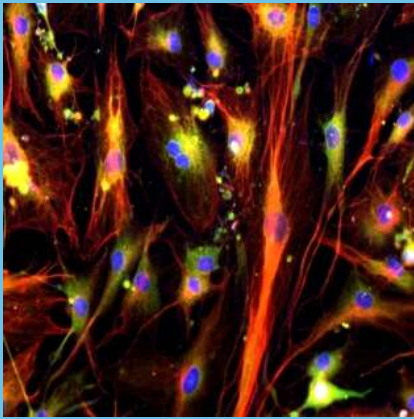


Inverted Optical Fluorescent Microscope

Inverted Optical Fluorescent Microscope, It is very useful for observing living cells or organisms at the bottom of a large container like a tissue culture flask, under more natural conditions than on a glass slide. Also designed for cell culture observation, to get details of cell growing process, internal spontaneous fluorescence phenomenon, living cell fluorescence transfection, protein transfer and etc. In addition it can used in micromanipulation applications where space above the specimen is required for manipulator mechanisms and the micro tools they hold, and in metallurgical applications where polished samples can be placed on top of the stage and viewed from underneath using reflecting objectives. This microscope has new generation of infinity color corrected optical system, professional plan semi-apochromatic fluorescence objectives, present you sharp and bright fluorescence image.



Specifications

Optical System	Infinity Color Corrected Optical System	
Head	Trinocular Head , Gemel Viewing Head, 45 Degree Inclined, Interpupillary Distance 54-75mm, Splitting Ratio 100:0 or 0:100	
Eyepiece	PL10x/22mm, High Eyepoint, Wide Field	
Objective	Long Working Distance Infinity Plan Achromatic Objectives LWDPL10X/0.25, W.D.=7.94mm LWDPL20X/0.40, W.D.=7.66mm LWDPL40X/0.60, W.D.=3.71mm Long Working Distance Infinity Plan Phase Contrast Objectives LWDPH20X/0.40, W.D.=7.66mm .	Long Working Distance Infinity Plan Fluorescent Objectives LWDPLF4X/0.13, W.D.=18.52mm LWDPLF10X/0.30, W.D.=7.11mm Long Working Distance Infinity Plan Semi-Apochromatic Objectives LWDPLFPH20X/0.45, W.D.=5.91mm LWDPLFPH40X/0.65, W.D.=1.61mm Long Working Distance Infinity Plan Phase Contrast Objectives LWDPH10X/0.25, W.D.=7.94mm
Stage	Fixed Stage Size 250*160mm, Slider Clips --Glass Plate --Metal Plate --Petri Dish Holder, Dia.35mm . . .	Fixed Stage Size: 250*160mm, Slider Clips, with Extension Plate and Coaxial Moveable Stage, Moving Range120*78mm --Glass Plate --Metal Plate with Kidney Slot --Petri Dish Holder, Dia.35mm --Slide Holder, Dia.54mm,26.5x76.4mm --Teraseki Holder, Dia.65mm,56x81.5mm
Focusing	Coaxial Coarse & Fine Focusing System, Coarse Adjustment Range 9mm, Fine Adjustment Precision 0.002mm,with Tension Adjustment, with Safety Stop	
Condenser	N.A.0.3 Kohler Illumination Condenser, with Phase Adjustable Slide Plate, Long Working Distance 72mm. The Whole Set Can Be Rotated Down	
Phase Contrast	Phase Contrast Plug-board for 10x-40x, Center Adjustable Centering Telescope Dia. 30mm	
Filter	Dia.45mm Green Interference Filter Dia.45mm Color Temperature Change Filter	
Reflected Fluorescence illumination System	Reflected Kohler Illumination with Iris Field Diaphragm, Centering Adjustable U-LH100HG Mercury Lamp House, Filament Center and Focal Distance Adjustable, with Mirror, Mirror Center and Focal Distance Adjustable U1-RFLT100 Digital Power Control Box, Wide Voltage Range 90-240V AC Imported OSRAM 100W DC Mercury Bulb Centered Objective For Mercury Bulb Band-pass Fluorescent Filter B, G	
		Band-pass Fluorescent Filter B, G, UV
CCD Adapter	0.67x CCD Adapter, for 2/3" CCD Camera	
CCD Camera	1.4M, 2/3" CCD, USB 2.0 Cold CCD Scientific Research Class Cold CCD,	
Light	Kohler Illumination, With Iris Aperture, Halogen 6V30W, Pre-centered, Intensity Adjustable	
Power	Wide Voltage 90-240V	