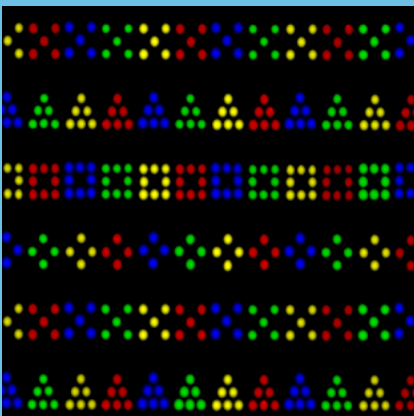
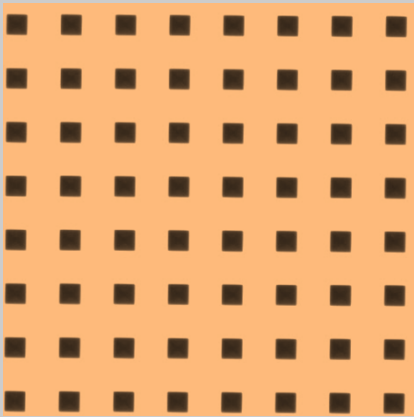
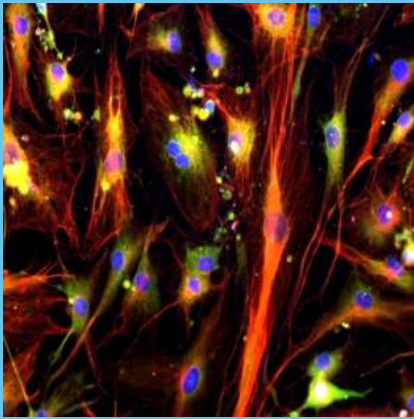


# Fluorescent and Optical Microscopes



ACST fluorescent and optical microscopes are for imaging any type of sample from fabricated microstructures to biological specimens.

- 10x, 20x, 40x, 60x and 100x objectives
- Reflected light fluorescence
- Resolution at least 1 micron
- Filters: rhodamine/red 530, Alexa 488/FITC, and DAPI/blue



# Specifications

<b>Optical system:</b>	Infinity color corrected	<b>Photo Eyepiece:</b>	PK Mount or MD Mount with 3.2X Eyepiece tube
<b>Digital Camera:</b>	Infinity Camera 2, USB2.0 output. Optional	<b>Software:</b>	1.4M,2/3" cool CCD, refrigeration - 20°, standard Fluorescent analysis software, included with camera only
<b>Head:</b>	Compensation trinocular head, 30° inclined, 360°	<b>Oil:</b>	immersion oil without fluorescence 30ml
<b>Eyepiece:</b>	High eye-point wide field plan eyepiece PL10x22mm, reticle can be assembled. Infinity plan semi-apochromatic fluorescence objectives	<b>Reflected Fluorescent System:</b>	6-Holes Disc Reflected fluorescence Illumination HBO Ultra Hi-Voltage Spherical Mercury Lamp 100W/DC OSRAM  Fluorescence filter system B Fluorescence filter system G Fluorescence filter system U Fluorescence filter system V
<b>Nosepiece:</b>	5 Holes revolving nosepiece inward	<b>Objective:</b>	Infinity Plan Semi-Apochromatic Fluorescence Objectives  4x/0.13, WD=15.13mm 10x/0.3, WD=8.53mm 20x/0.5, WD=2.33mm 40x/0.75 (Spring), WD=0.55mm 100x/1.3(Spring, Oil), WD=0.21mm
<b>Focusing:</b>	Coaxial focus system with upper limit and tension adjustment; coarse range: 25mm; fine precision: 0.002mm; focus height adjustable.	<b>Optional Accessories:</b>	Phase Contrast Attachment Polarizing Attachment Dark Field Condenser Infinity Camera 2, USB2.0 output. Optional
<b>Stage:</b>	175x145mm double layer mechanical stage, rotatable; with special fabrication processing, anti-corrosive and anti-friction; X,Y moving hand wheel in right or left hand; moving range: 76x50mm, precision : 0.1mm.		
<b>Condenser:</b>	N.A.1.2/0.22 swing-out type achromatic condenser		
<b>Light Source:</b>	6V/30W halogen, pre-centered, intensity adjustable.		
<b>Filters:</b>	Yellow, Green, Neutral color and Blue Filter, Attenuation Plate, Transmission 25%		